



# heart

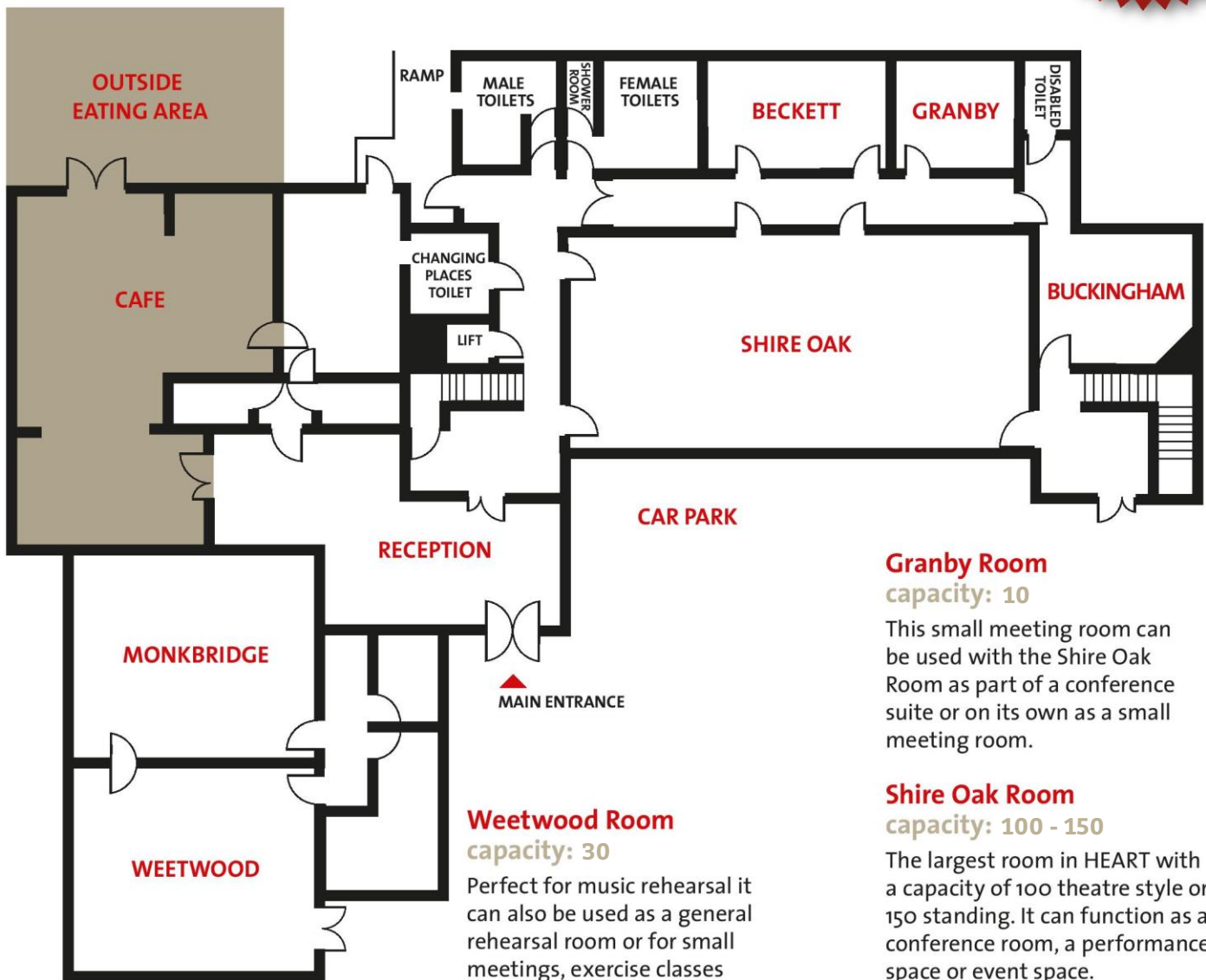
headingley enterprise and arts centre

## Room Guide

t: 0113 275 4548 | e: admin@heartcentre.org.uk

Contact us  
to discuss  
options and  
prices

### GROUND FLOOR



#### Monkbridge Room capacity: 30

Perfect for music rehearsal it can also be used as a general rehearsal room or for small meetings, exercise classes or other activities. With under-floor heating. Available from 5.30pm onwards.

#### Weetwood Room capacity: 30

Perfect for music rehearsal it can also be used as a general rehearsal room or for small meetings, exercise classes or other activities.

#### Beckett Room capacity: 15

Can be used with the Shire Oak room for refreshments or break-out meetings. It can also be booked separately as a meeting room.

#### Granby Room capacity: 10

This small meeting room can be used with the Shire Oak Room as part of a conference suite or on its own as a small meeting room.

#### Shire Oak Room capacity: 100 - 150

The largest room in HEART with a capacity of 100 theatre style or 150 standing. It can function as a conference room, a performance space or event space.

#### Buckingham Room capacity: 15

Behind the 'stage' area of the Shire Oak Room and can become the 'green room' for performers during performances. At other times it can be booked as a meeting room.

# Room Guide

t: 0113 275 4548 | e: admin@heartcentre.org.uk | www.heartcentre.org.uk

## FIRST FLOOR

### Claremont Room

capacity: 30

Light and airy and can function as a small conference room, a larger meeting room, an activities space or classroom.

### Newport Room

capacity: 10

Can also be used as a break-out room for conferences taking place in the Claremont Room.

### Broomfield Room

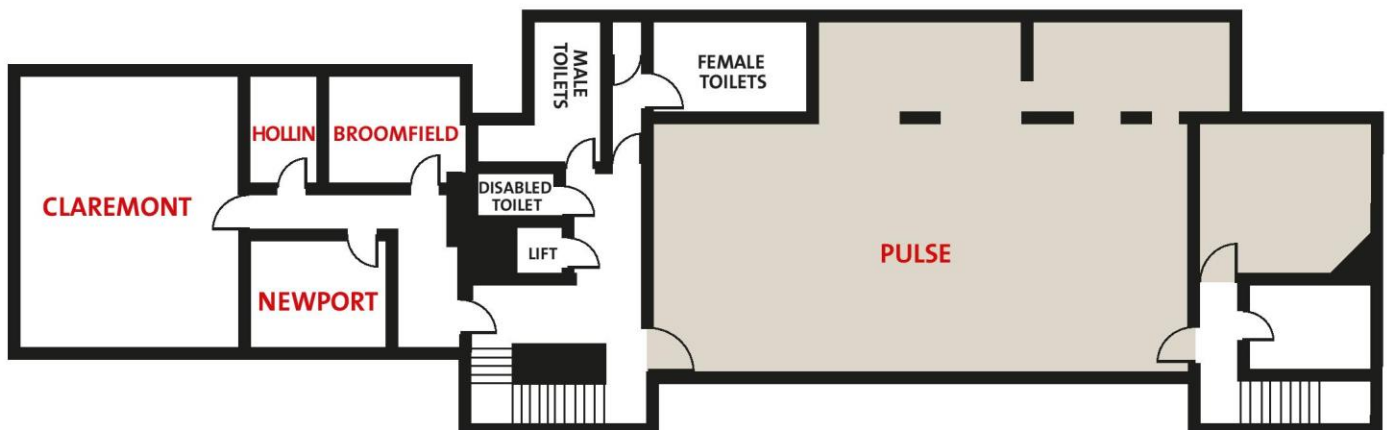
capacity: 10

Can also be used as a break-out room for conferences taking place in the Claremont Room.

### Pulse

Run on a membership basis giving you the opportunity to buy hours of office space at times that suit you. With all the benefits of a fully serviced building, Pulse offers space at a fraction of the cost of a traditional office unit. (Separate Pulse insert available)

Claremont, Newport, Broomfield and Hollin can be hired as a suite of rooms – ideal for a day long workshop or training events that require “break out” and tea/coffee space.



## MEZZANINE

### Ridge Room

capacity: 25

This is an atmospheric room with exposed beams and low-level windows. It can be used for meetings, classes or other activities.

### Pulse

Run on a membership basis giving you the opportunity to buy hours of office space at times that suit you.

